

Air Cooler Instruction Manual
MODEL : AC017



Introduction

This model of the air cooler is novel and attractive with luxurious appearance, reasonable features, and easy operation. With such air cooler, you could feel the cool wind in hot summer. That makes you enjoy real natural home life.

Working Elements

The Air Cooler function absorbs heat from the surrounding and converts it to cool air through the process of water evaporation (driven from the water pump to the cooling pads) and blown to the surroundings by the air blower.

What is an Ion?

An atom or group of atoms that bears an electric charge is called ion. Positively charged ions are called positive ions and negatively charged ions are called negative ions.

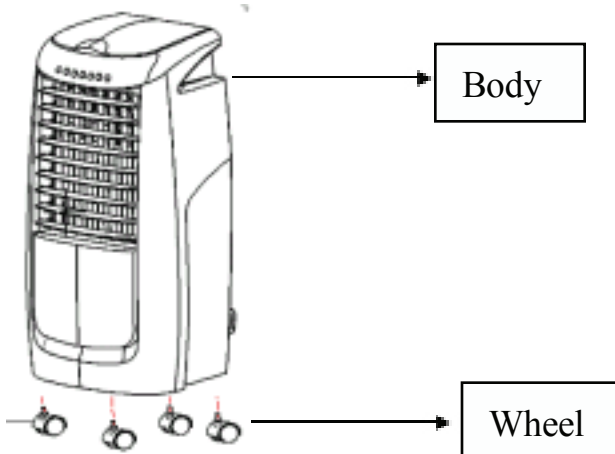
How do negative ions purify the air?

Most particles in the air have a positive charge or are positively ionized. Negative ions are naturally drawn to these positively charged particles. When there is enough concentration of negative ions in the air, they will attract floating particles in large numbers. This causes the particle to become too heavy to remain airborne. As a result the particle will fall to the ground and thus keeping them out of the breathing zone and the respiratory system which can trigger breathing and health problems.

Benefits of negative ions

- > Negative ions increase the flow of oxygen.
- > Negative ions purify the air by eradicating the airborne smoke and particles.
- > Purified air results in higher alertness, decreased drowsiness and more mental energy.

How to Assemble the fan



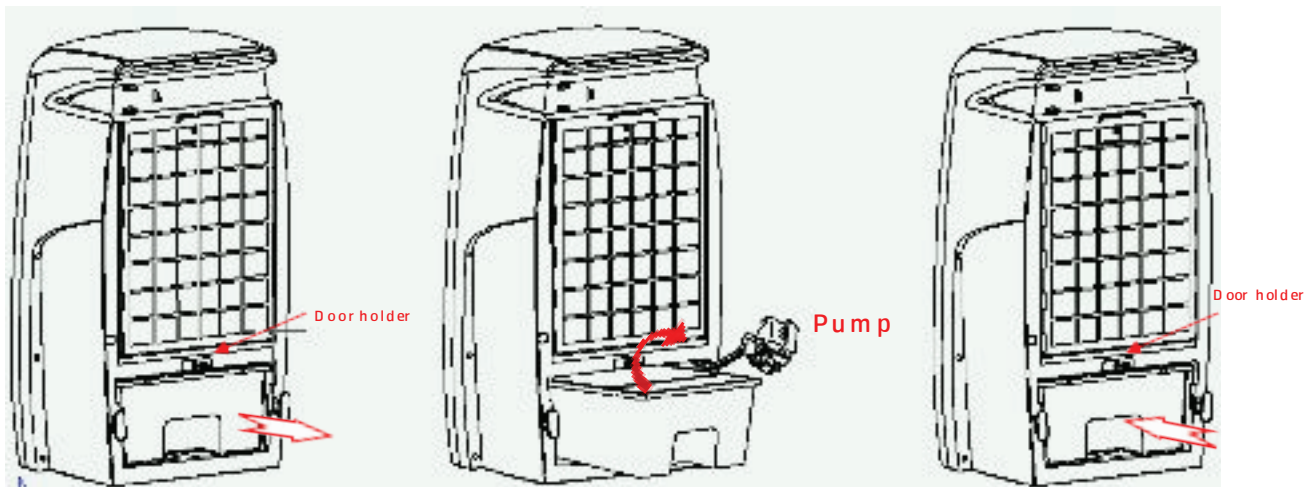
Position air cooler on a level floor, insert the wheels into the holes positioned on the bottom of the unit.

Parts Identification and Technical Specification

Model	AC017
Voltage	240V
Frequency	50Hz
Power	65W
Water Tank	8.0L
Evaporation capacity:	550M L/H

Filling the Tank with water

Place the air cooler on a level ground and follow the steps below :



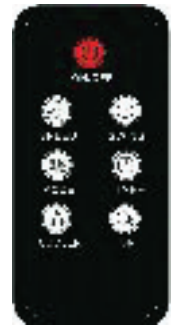
①

②

③

1. Rotates the door holder to horizontal position, and then put out the water tank; Picture ①
2. Raise the water pump frame when the tank was pull out around 3/4, and then remove the tank completely; Picture ②.
3. Take the water tank to fill in water or clean;
4. Put the water tank into the product around 1/4, then fix the pump frame and push the tank into the product body completely;
5. Fix the door holder lastly. Pic. ③

Operating the air cooler



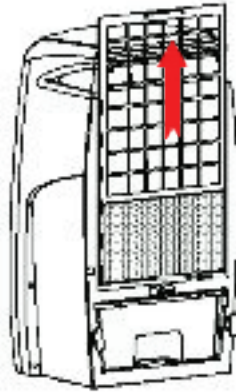
1. Insert the plug into the electrical outlet and make sure that the indicator light is on.
2. Press "On/Off" button: Press this button, the fan start, and the wind mode is "normal", all indicator lights on; Press this button again, all function off (If you have used "cooler" function, when you stop the product, the fan will be continue working for 5min to dry the cooler master; Press the "Off" button twice, the product will be forced to stopped.)
3. Press "WIND" button, to choose the wind type.
"Normal": Wind blow based on Low/Med/High speed.
"Natural": Imitates the blow of natural wind based on strong and soft wind.
"Sleep": The first half an hour blows as strong and soft natural wind and becomes med natural wind. The second half an hour it changes to soft natural wind.
4. Press "SWING" button, to allow wind direction to move from left to right. Press this button again to stop oscillation.
5. Press "SPEED" button to choose the wind speed with Low-Mid-High, according indicator light will be on;
6. Press "ION" button to activate the ionizer which generates negative ions throughout the room and causes dust, pollen, mold spores, pet dander and etc. to attract to it. "ION" button may be used separately.
7. Press "COOLER" button and the water pump starts running. The water circulates from the cooler master to allow warm air to be converted to cool air (warm air combined with water vapor) and cooler down the temperature effectively. If you have used "cooler" function, when you stop the product, the fan will be continue working for 5min to dry the cooler master; Press the "Off" button twice, the product will be forced to stopped.
8. Press "TIMER" button to set the fan running time between 0.5 - 7.5 hours and automatically switches the fan off afterwards. There are 4 indicator lights for the timer. To set a time of 0.5 hour, you need to press the button once and to set 7.5 hours of running time you need to press the button 15 times.
9. Remote control must be aimed directly at the unit to function properly. If the remote control does not function well, please check the battery.

Safety Precautions

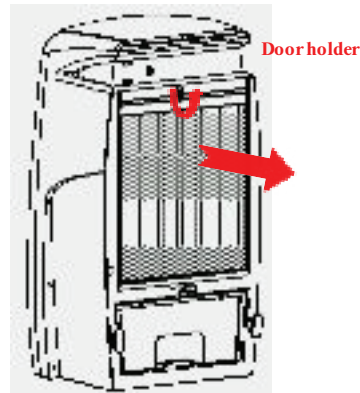
1. Make sure this appliance and the power cord has no physical damage before operating the unit. Please consult the authorized service center when in doubt.
2. Do not touch the power cord with wet hands.
3. Do not touch the water in the tank when the unit is plugged to the electrical outlet.
4. Do not insert any object into the grille guard or mist spray opening to avoid damaging this appliance.
5. Unplug the unit when it is not in operation, during cleaning or when moving it.
6. Do not pull the plug while the power is on. Always ensure that the plug is fully inserted into the electrical outlet before operating it.
7. Do not remove the water tank when the unit is plugged.
8. Do not add any chemical, metal ingredient into the water tank as these materials may damage the unit.
9. A safety water level switch will automatically shut off the ultrasonic transducer when water in the tank is below the minimum level. Please add water if needed.
10. This appliance must be used under the rated voltage and frequency as indicated in rating label.
12. Do not disassemble, repair or modify this appliance on your own. Warranty shall be void if repair is carried out by an unauthorized service center.
13. If the power cord is damaged, it must be replaced by the manufacturer or its service agent to avoid electrical hazard.
14. This appliance is not intended to be operated by persons (including children) with reduce physical, sensory or mental capabilities or lack of experience and knowledge unless they have been given supervision or instruction concerning the use of the appliance by a person responsible for their safety.

Cleaning and Maintenance

1. Unplug the unit before cleaning.
2. Please clean the water tank and filter mesh every two weeks.
3. Please clean the cooling master when it is visibly dirty or every month (depending on the condition of the surrounding).
4. Use a dry cloth to absorb remaining water on the atomizing cup, and dry it using a piece of soft cloth.
5. Pack this appliance properly and store it in a cool dry place if it is not used for a long period.



④



⑤

Cleaning method:

- 1、 Remove the filter first, pic. ④⑤
- 2、 Rotates the door holder to horizontal position, pic. ④⑤ , and then take out the water master;
- 3、 Then, you can take the filter and cooler master to clean;
- 4、 Clean the water tank and the flume at the same time.