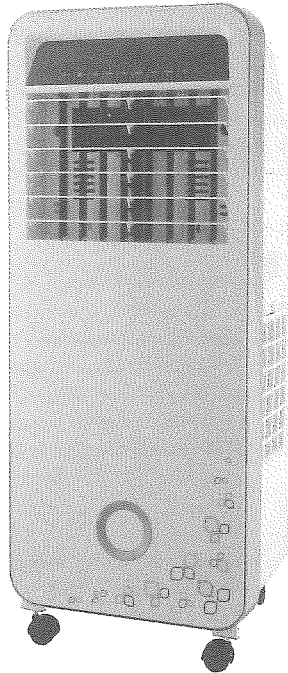


# AIR COOLER

## MODEL:AC 020A

(Please read these instructions carefully before using for first time. Keep these instructions safe for your future reference..)



### INTRODUCTION

- Thank you for purchasing our AIR COOLER.
- Each unit has been manufactured to ensure safety and reliability.
- Before first use, read the instructions carefully and keep them for further reference.

## PERFORMANCE PARAMETERS

Model	Rating Power	Power	Max Water Injection Rate	Specification
AC 020A	220-240V 50Hz	100W	12L	Cooling only

## FUNCTIONS

- **Principle of Cooling:** Water is took from the water tank by pump to the top, then the water drops into paper evaporator . When the water in paper evaporator evaporates to water vapor, the air is cooled. People will feel cool wind when the cool air is delivered by fan.
- **Electronics control:** safe and durable, have an attractive appearance.
- **Adjustable speed and fan type:** have three speeds and fan types, and it can send wind from side to side neatly.
- **Cooling:** Through air evaporating, cut down the air temperature and raise relative humidity.
- **Deliver wind at wide angle:** swing the blades automatically, deliver wind at wide angle. Also swing the blades transversely by your hands, choose the wind direction up and down..
- **Remote control:** 6 meters far away, receive at 60 degree wide angle.

## ASSEMBLING AND WATERING

1. **Watering:** add clean water base on the MIN and MAX level.

Attention:

- a. Pay attention to the level of water tank when add water.
- b. The level of water tank should not over "MAX" scale at any time, when humidifying, the total level of water tank should not below "MIN" scale.
- c. Put ice or frozen ice box to the water tank if you want to strengthen the efficiency of cooling. But the total level of water tank should not over "MAX" scale.

## OPERATION

- **ON/OFF at the back side:** Please find this key and turn on the power at the BACK of appliance, the air cooler and heater will be ready, at the same time the buzzer reminds "Bi". When the appliance need stop to work, please turn off.
- **ON/OFF on control panel :** Press the key, turn on the appliance, second press, shut it down .  
**Speed:** press this key, start the appliance, the corresponding function changes as follows when you press the key serially: LOW→MEDIUM→HIGH→LOW.
- **Fan type:** press this key, you can choose the normal wind, natural wind and sleeping wind circularly. Under the situation of normal wind it has no corresponding indicator light, but others have. NOTE: heater has no this function.
- **Swing :** press this key, the wind direction can swing flatly, and the swing indicator light is on. It cancels this function when you press again.
- **Timer key:** press this key, the timer from 1 to 12 hours options with step 0.5 hours. It will shutdown if the timer finished.

- **Cooling:** press the key to start cooling system. It cancels this function when you press again.  
**IMPORTANT:** Please be sure there is enough water in the water tank before press this key.

### THE USE OF REMOTE CONTROL

Fit on batteries, it can works. It have the same function as control panel. Should aim at the remote control reception window when you use, and the effective distance is 6 meters. When the remote control is not in use, please put away it for using next time.

#### **Attention:**

- a. Do not mix old battery with the new one in use.
- b. Please take out the batteries for long time nonuse.
- c. The remote control has no mode key, so press the key by your hands.

### THE USE OF ICE BOX

The ice box has a particular feature of keeping cool, it can absorb heat and let the water temperature below the environmental temperature.

#### **Using methods:**

- a. add water to the ice box (not full) and put it into the refrigerator to make sure that it iced absolutely.
- b. Open the door, put the frozen ice box into the water tank.
- c. There have two ice boxes , can be used circularly.

### CAUTION

1. Use as per the rating voltage.
2. Do not repair or remake the appliance by yourself, it should be repaired by the repairmen.
3. Do not operate the appliance with wet hands, in order to avoid damage.
4. If the supply cord is damaged, it must be replaced by the manufacturer, its service agent or similarly qualified persons in order to avoid a hazard.
5. When the appliance is not in use, switch off and unplug it.
6. Do not insert foreign things to air outlets and inlets, in order to avoid damage.
7. Do not use the appliance near explosive and combustible gas. Avoid long-term direct solar radiation.
8. Use the appliance only on a flat surface.
9. Do not use outdoors.

10. The level of water tank should not over "MAX" scale at any time, when humidifying, the total level of water tank should not below "MIN" scale.
11. After adding water to the water tank, do not tilte or knock over it when you put or move. If you want to move , please push slowly from the side, in order to avoid spilling.
12. Do not turn over the appliance. If it is toppled over and there are some water in the body, should unplug the power supply first. Then send it to the repair department or after-sales service and overhaul the appliance.
13. Do not cover the air vent.
14. Clean the appearance with a lightly damp cloth. Do not use any type of detergents or solutions.
15. Do not rinse the appliance.
16. Do not make air outlets and inlets near the wall or curtain.
17. Do not knock or shake the body when using, otherwise it may cause stop automatically.
18. The water in tank will easily metamorphose and has odor in summer, please renew the water frequently.
19. This appliance is not intended for use by persons (including children) with reduced physical, sensory or mental capabilities, or lack of experience and knowledge, unless they have been given supervision or instruction concerning use of the appliance by a person responsible for their safety.
20. Children should be supervised to ensure that they do not play with the appliance.
21. To avoid the risk caused by instability of unit, you must fix the unit firmly according to manual book.
22. Fan for temperate climates only.
23. Should it be necessary to move the unit after the water has been added, roll gently to the required position and activate the bracket the castors.

The power cord is with "Y" type connection and it must be changed by professional technicians if necessary.

## CLEANING AND MAINTENANCE

**WARNING:** Ensure that the fan is switched off from the supply mains before removing the air filter screen.

1. Clean the air filter screen  
Cut off the power supply, pull the handle of air filter screen, remove it from appliance. Clean the air filter screen with neutral detergent and banister brush, then clean it with clear water. Finally, reinstall to the appliance.
2. Clean the wetted pad  
Cut off the power supply, take down the air filter screen, then draw the wetted pad from

support. Clean the wetted pad with neutral detergent and banister brush, then clean it with clear water. Finally, reinstall to the appliance.

Attention: the wetted pad must be installed horizontally, in order to avoid leaking.

3. Clean the water tank

Cut off the power supply, open the door, take out the water tank, clean it with neutral detergent, and wash it with clear water, then reinstall to the appliance.

4. Clean the shell

Clean with neutral detergent and soft cloth.

Attention: cut off the power supply when clean the appliance as there have a high pressure in the body. Do not leave any water on the surface of control panel.

### MALFUNCTION AND MAINTENANCE

Malfunction	Causes	Solution
No action	1. Power off or poor connection. 2. Not press the "ON" key on the control panel.	1.Plug the power cord and make sure it connects well. 2.Press the "ON" key on the control panel.
Poor effect of dedusting	1.Block the air filter screen with dust. 2.Block the air inlet with foreign things..	1.Purify the air filter screen. 2.Remove foreign things from the air inlet.

Repair the appliance under the situation as follows:

1. Abnormal action or no action. it is invalid by the above approach.
2. Abnormal action caused by ingress of water or foreign things.